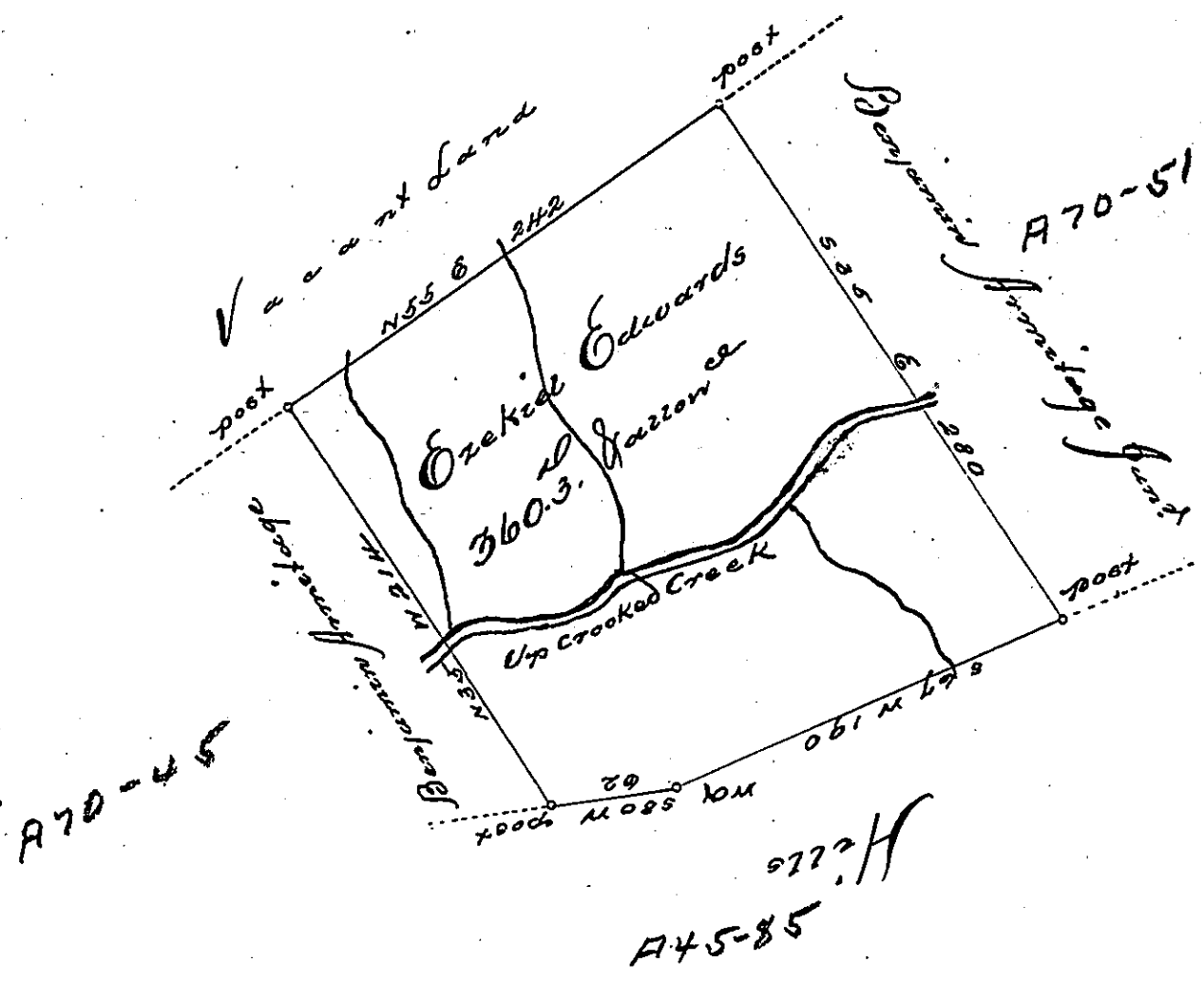


AA14-147



Survey'd on the 8th day of July 1773 to Ezekiel Edwards the above
 Described Tract of three hundred & sixty acres & a quarter of an acre of
 the usual arrowand of six ip ct. Situate on Crooked Creek adjoining Ben-
 jamin Armitage in the County of Westmoreland - By Warrant of the 27th day of
 April 1773.

J. Joshua Ordet. Ad.

To John Lukens Esq.
 S. Gen!

IN TESTIMONY that the above is a copy of the original remaining on file in
 the Department of Internal Affairs of Pennsylvania, made
 conformably to an Act of Assembly approved the 16th day of
 February, 1833, I have hereunto set my Hand and caused
 the Seal of said Department to be affixed at Harrisburg,
 this first day of November 1898

James W. Latta
 Secretary of Internal Affairs.